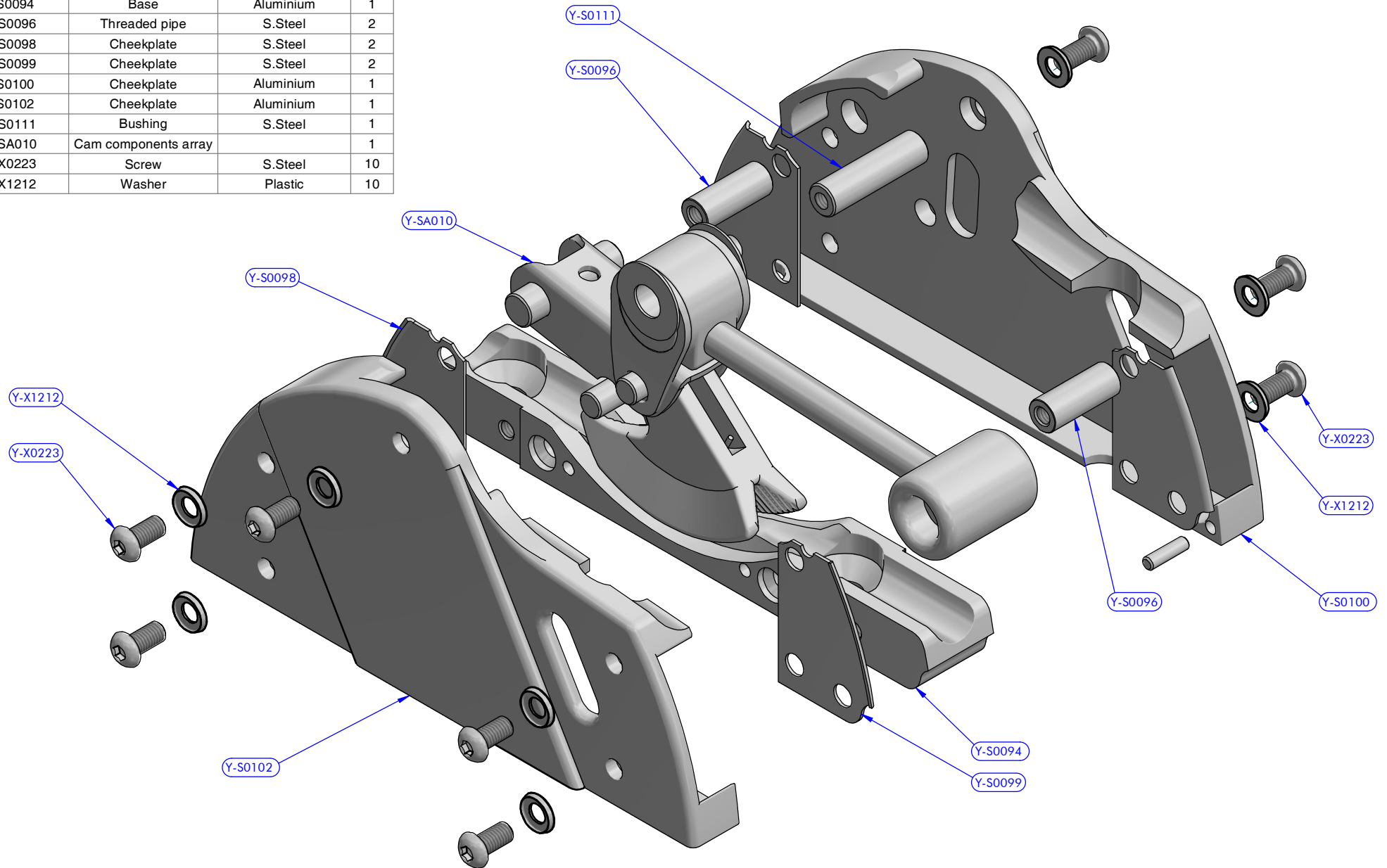
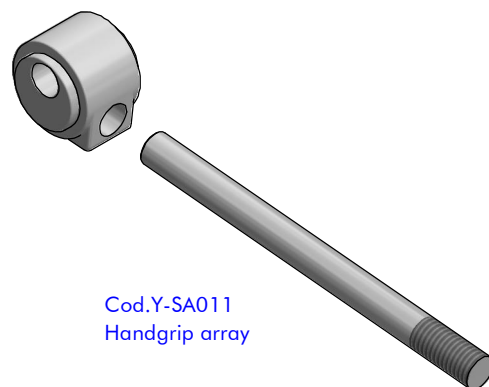
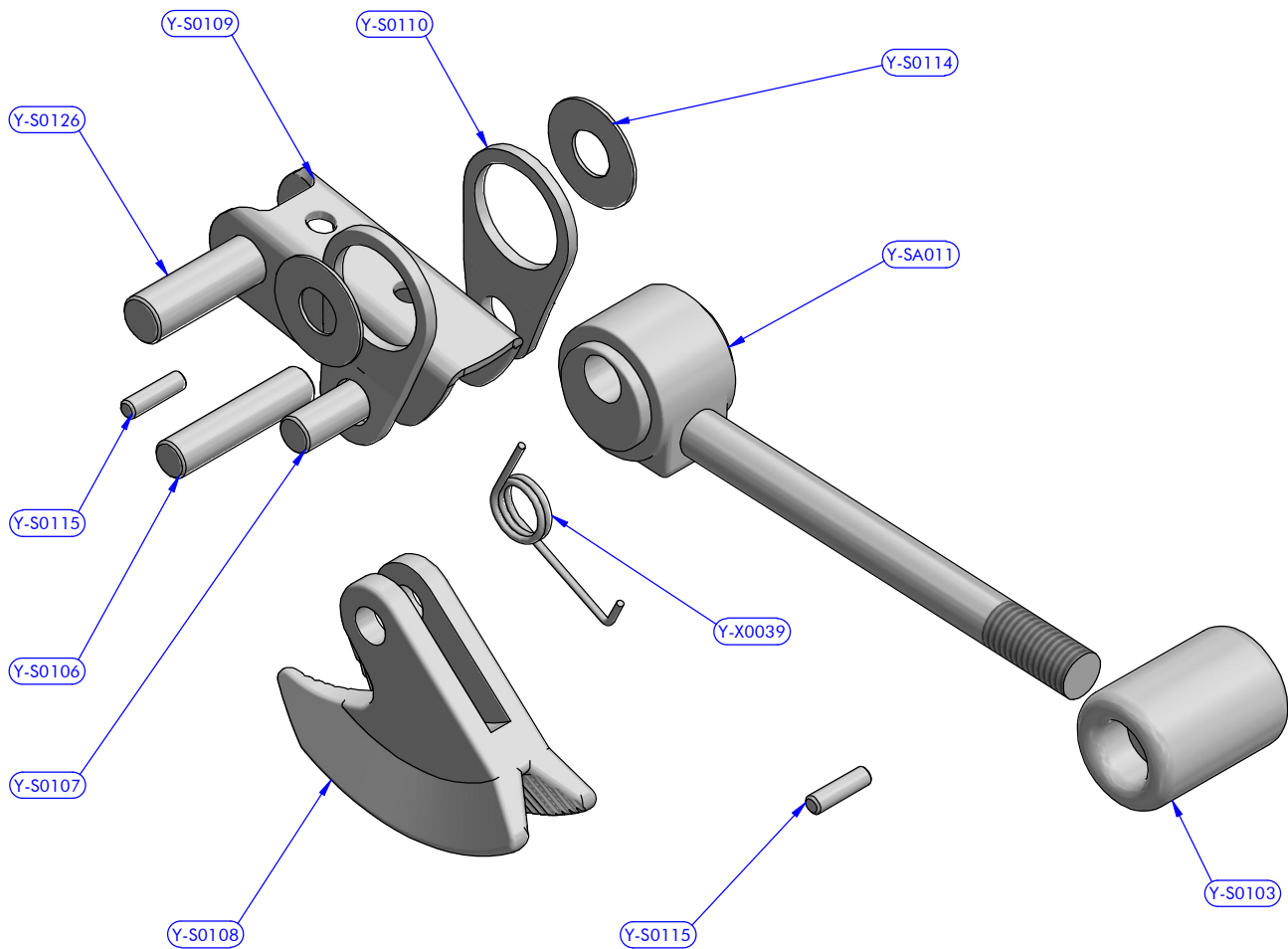


PART LIST

CODE	DESCRIPTION	MATERIAL	Q.TY
Y-S0094	Base	Aluminium	1
Y-S0096	Threaded pipe	S.Steel	2
Y-S0098	Cheekplate	S.Steel	2
Y-S0099	Cheekplate	S.Steel	2
Y-S0100	Cheekplate	Aluminium	1
Y-S0102	Cheekplate	Aluminium	1
Y-S0111	Bushing	S.Steel	1
Y-SA010	Cam components array		1
Y-X0223	Screw	S.Steel	10
Y-X1212	Washer	Plastic	10



	V-Grip Plus series	Complete array	07/09/2020	00
	FAMILY	ARTICLE	DATE	REV.
Exploded view		508.141	20120912	1 / 1
DESCRIPTION		MODEL CODE	DWG N.	PG.



Cod.Y-SA011
Handgrip array

PART LIST

CODE	DESCRIPTION	MATERIAL	Q.TY
Y-S0103	Grip	Mekton	1
Y-S0106	Spindle	S.Steel	1
Y-S0107	Spindle	S.Steel	1
Y-S0108	V-Grip Cam	S.Steel	1
Y-S0109	V-cam bracket	S.Steel	1
Y-S0110	Connecting rod	S.Steel	2
Y-S0114	Washer	Mekton	2
Y-S0115	Spindle	S.Steel	2
Y-S0126	Spindle	S.Steel	1
Y-SA011	Handgrip array	Various	1
Y-X0039	Spring	S.Steel	1

antal

V-Grip Plus series
FAMILY

Cam components array
ARTICLE

Exploded view
DESCRIPTION

Y-SA010
MODEL CODE

21/10/2011 DATE	00 REV.
20090707 DWG N.	/ PG.